

## **APPLICATION EXAMPLES** for floor treatment and maintenance



Hard coverings • Wooden floors •  
Stone floors • Carpets



# Application for floor treatment and maintenance

**Pages 4-7**  
Sanding and cleaning pads

**Pages 8-10**  
Sanding and cleaning machines

**Page 12**  
Nubbed floors

Pads: Abranopp® cleaning pads



**Page 14**  
Rubber cleaning

Pads: Jöst microfiber pad grey, Abraflex® Superpad red, Jöst Diamond® pad



**Page 16**  
Linoleum floors

Pads: Blue Wave, Abraflex® Maroon pad, Diamond® pad and Abraflex® Superpad red



**Page 18**  
PVC/vinyl floors without structure

Pads: Blue Wave, Abraflex® Maroon pad, Diamond® pads, useit®-Abrafilm®



**Page 20**  
Structured PVC/vinyl floors

Pads: Jöst microfiber pad grey, Wimbledon lawn pad, Blue Magic



**Page 22**  
Epoxy resin floors

Pads: Wimbledon lawn pad, Blue Wave melamine pad, Jöst Diamond® pads, Abraflex® Maroon pad



**Page 24**  
Mineral floor coverings

Application examples: mineral floor coverings such as marble, terrazzo, concrete.  
Pads: microfiber pad grey, Blue Wave, Diamond® pads



**Page 26**  
Tiles without structure

Pads: microfiber pad grey, Blue Wave melamine pad, Abraflex® Maroon pad



**Page 28**  
Structured tiles & stone floors

Application examples: floorboards for indoor and outdoor use  
Pads: microfiber pad grey, Wimbledon lawn pad



**Page 30**  
Parquet and floorboards

Pads: microfiber pad grey, Abraflex® Maroon pad, useit® Superpad yellow, useit®-Abrafilm®, useit® Superpad unperforated



**Page 32**  
Sensitive surfaces: Stainless steel, glass, ceramic

Pads: Crusty® cleaning products



**Page 34**  
Textile floor coverings/upholstery

Pads: Jöst microfiber pad blue/melange





# Sanding- and cleaning pads

Functional solutions for the widest variety of requirements



## ABRANOPP® CLEANING PADS

The Abranopp® Cleaning System – specially developed for structured floor coverings, the patented nub design masters every deep cleaning task. With the Abranopp® Cleaning System, you work thoroughly around each nub, effectively removing deep-seated dirt – including that typical, stubborn edge buildup! The pads are available in 5 colors for different types of cleaning – white for polishing, purple and grey for cleaning, green for deep cleaning and black for stripping.

<b>Available dimensions:</b>	190x340mm	335x485mm	Ø 150	Ø 160	Ø 200	Ø 230	Ø 250	Ø 280	Ø 300
	335x585mm	Ø 330	Ø 375	Ø 410	Ø 430	Ø 460	Ø 485	Ø 500	Ø 530

Other dimensions available on request



## MICROFIBER PADS

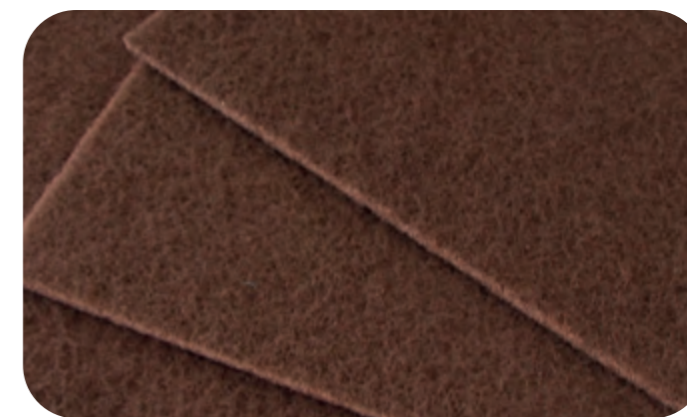
The JÖST high-quality microfiber pads – made in Germany – give you outstanding cleaning results with an unsurpassed price performance. When the pads are used in combination with the JÖST Floor Sander and Floor Sander Junior eccentric cleaning machines, the treatment is intensive and results in a very clean surface. You can clean different materials using only water – no chemical agents. Each of the four different JÖST microfiber pads has its own unique characteristics.

<b>Available dimensions:</b>	190x340mm	335x485mm	Ø 150	Ø 160	Ø 200	Ø 230	Ø 250	Ø 280	Ø 300
	355x605mm	Ø 330	Ø 375	Ø 410	Ø 430	Ø 460	Ø 485	Ø 500	Ø 530

Other dimensions available on request

## ABRAFLEX® MAROON PAD

The Abraflex® Maroon pad is the chemical-free solution for the partial or complete removal of floor coatings. The Abraflex® Maroon pad easily removes floor coatings using only water and no chemicals – on almost all surfaces and especially on light-colored floors. This pad is ideal for preparing worn, sealed and painted areas (such as sports halls) for a new coat of sealant. It's robust and can be used both wet and dry. Thanks to its stable and hard-wearing structure, the Abraflex® Maroon Pad has a longer lifespan and gives you excellent machine stability.



<b>Available dimensions:</b>	190x340mm	335x485mm	Ø 150	Ø 160	Ø 200	Ø 230	Ø 250	Ø 280	Ø 300
	335x585mm	Ø 330	Ø 375	Ø 410	Ø 430	Ø 460	Ø 485	Ø 500	Ø 530

Other dimensions available on request

## BLUE WAVE MELAMINE PADS

The new Blue Wave melamine pad is extremely robust and is made of 100% melamine, which is heated and compressed under pressure during production. The stable waffling is ideal for cleaning textured surfaces, does not break and is even more durable. The chemical-free and effective solution for removing stubborn dirt from all surfaces. The reinforced structure significantly increases the service life during cleaning work.



<b>Available dimensions:</b>	190x340mm	335x485mm	Ø 150	Ø 160	Ø 200	Ø 230	Ø 250	Ø 280	Ø 300
	335x585mm	Ø 330	Ø 375	Ø 410	Ø 430	Ø 460	Ø 485	Ø 500	Ø 530

Other dimensions available on request

## ABRAFLEX® SUPERPADS

Whether basic cleaning or maintenance cleaning, the Abraflex® Superpad cleaning nonwoven comes in several versions with different sizes. It is longer lasting, faster in the application, extends the life of floor coverings and protects your floor cleaning machines. The Abraflex® pads guarantee better cleaning results and offer a longer lifetime, improved performance and an excellent machine stability. Abraflex® Maroon pads: The chemical-free solution for the partial or complete removal of floor coatings.



<b>Available dimensions:</b>	190x340mm	335x485mm	Ø 150	Ø 160	Ø 200	Ø 230	Ø 250	Ø 280	Ø 300
	335x585mm	Ø 330	Ø 375	Ø 410	Ø 430	Ø 460	Ø 485	Ø 500	Ø 530

Other dimensions available on request



### JÖST DIAMOND® PADS

Our high-quality diamond pads with abrasive diamond grains are ideal for cleaning and maintaining hard floors and elastic floor coverings. Your floors will be refinished, cleaned and polished exactly in accordance with your wishes. They not only enable the chemical-free removal of coatings or the removal of scratches, but also top stripping without the use of additional chemicals. Matt stone surfaces are given a new shine. Levels 7 and 8 produce a unique brilliance and enable environmentally friendly maintenance cleaning without any cleaning agents.

<b>Available dimensions:</b>	190x340mm	335x485mm	Ø 150	Ø 160	Ø 200	Ø 230	Ø 250	Ø 280	Ø 300
	335x585mm	Ø 330	Ø 375	Ø 410	Ø 430	Ø 460	Ø 485	Ø 500	Ø 530

Other dimensions available on request



### WIMBLEDON LAWN PAD

The special combination of robust, synthetic fibers and outstanding workmanship makes this pad absolutely unique among artificial lawn pads. The tested & tried Velcro backing from JÖST gives the pad exactly the right grip – and it also serves as a water reservoir, which allows water to be absorbed and expelled again thanks to the special X-structure of the work surface. The bristles are extremely tough yet flexible, making them ideal for cleaning structured surfaces – and even giving a new shine to the deeper-lying joints.

<b>Available dimensions:</b>	190x340mm	335x485mm	Ø 150	Ø 160	Ø 200	Ø 230	Ø 250	Ø 280	Ø 300
	335x605mm	Ø 330	Ø 375	Ø 410	Ø 430	Ø 460	Ø 485	Ø 500	Ø 530

Other dimensions available on request



### BLUE MAGIC DRY CLEANING NONWOVEN

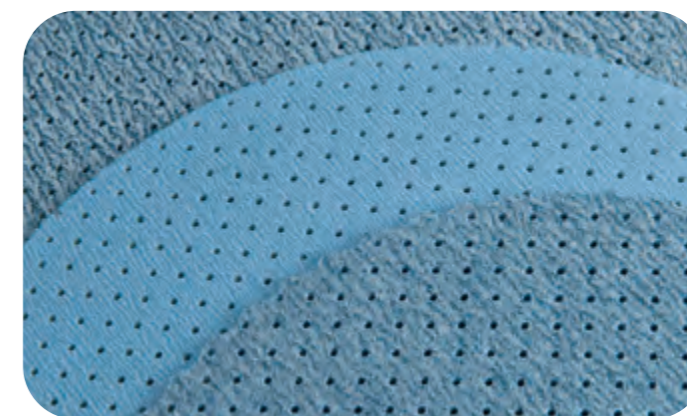
Due to its special coating the Blue Magic dust-binding cloth is perfectly suitable for the collection of dust and loose dirt. It's your ideal partner for removing dust and cleaning parquet and hard flooring. These oil-free dust-binding cloths are available in various sizes and forms – for wiping by hand, as tear-off roll goods or for floor wiping in a "mop design". In the healthcare sector, for example, dry cleaning gives you the advantage of directly binding germs. On-site disposal significantly minimizes the risk of spreading germs.

<b>Available dimensions:</b>	<i>roll material</i> 150mmx10m	<i>roll material</i> 150mmx25m	<i>roll material</i> 115mmx10m	<i>roll material</i> 115mmx25m	210x150mm
		400x120mm	450x150mm	600x200mm	800x200mm

Other dimensions available on request

### USEIT®-ABRAFILM®

The newly developed useit®-Abrafilm® offers excellent cutting performances and has an extremely durable and tearproof film carrier. The finest sanding up to grit 3000 is possible with the useit®-Abrafilm®. This results in smoother sanding and therefore finer results. The multihole perforation of the abrasive in combination with the multilayer structure of the Velcro-type system guarantees the exact alignment of the abrasive grain. This leads to continuous dust extraction over the entire surface, optimum sanding results and a much higher service life. The useit®-Abrafilm® is suitable for both wet and dry sanding.



<b>Available dimensions:</b>	190x340mm	335x485mm	Ø 150	Ø 160	Ø 200	Ø 230	Ø 250	Ø 280	Ø 300
	335x585mm	Ø 330	Ø 375	Ø 410	Ø 430	Ø 460	Ø 485	Ø 500	Ø 530

Other dimensions available on request

### USEIT® SUPERPAD YELLOW

The useit® Superpad P yellow is ideal for dry construction, parquet flooring and wood applications thanks to its robust backing paper, half-open scatter and special Velcro coating. The tightly-spaced multi-perforations in combination with the specially designed backing layer ensures the permanent removal of the sanding dust. This is in keeping with the cleanliness of the rooms to be machined - and at the same time it represents an important aspect in terms of work safety and low dust exposure.

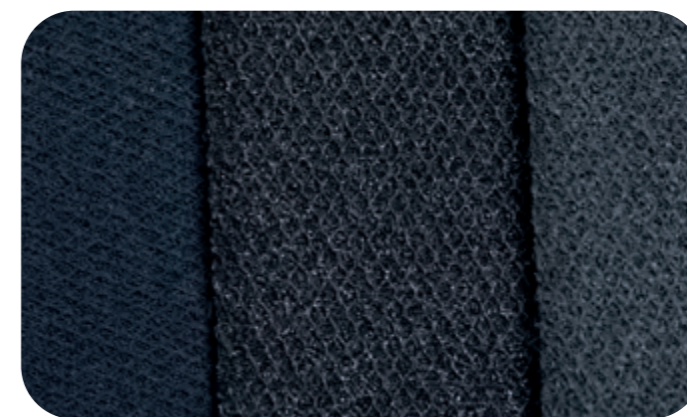


<b>Available dimensions:</b>	190x340mm	335x485mm	Ø 150	Ø 160	Ø 200	Ø 230	Ø 250	Ø 280	Ø 300
	335x585mm	Ø 330	Ø 375	Ø 410	Ø 430	Ø 460	Ø 485	Ø 500	Ø 530

Other dimensions available on request

### USEIT®-SUPERFINISHING PADS

The useit® Superfinishing Pads SG, SG2 and SG3 are innovative high-performance abrasives that have been developed for a wide range of materials such as solid surface materials, paints and metals. They offer up to 6x higher sanding performance compared to conventional abrasives and enable dust-free work thanks to effective extraction. The SG2 pad is particularly suitable for final filler sanding and removing paint runs, while the SG3 pad enables enormous savings in polishing processes. All pads adapt well to curves and bent surfaces and are suitable for wet and dry sanding.



<b>Available dimensions:</b>	190x340mm	335x485mm	Ø 150	Ø 160	Ø 200	Ø 230	Ø 250	Ø 280	Ø 300
	335x585mm	Ø 330	Ø 375	Ø 410	Ø 430	Ø 460	Ø 485	Ø 500	Ø 530

Other dimensions available on request



# Sanding- and cleaning machines

The right machine for every requirement

## FLOOR CLEANER JUNIOR 18

Cordless eccentric machine

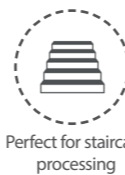
- Power consumption: 300 Watt
- Motor speed: 2800-3000 1/min
- Work surface: 190x340mm
- Battery life: 45-60 min.  
*(depending on floor conditions and pads)*
- Water tank capacity: 3 l
- Weight: 17,5 kg
- Weight heavy: 20 kg
- Weight 18V battery: 1 kg
- Stroke: 5 mm
- Hose connection: 27 mm
- Working height: 14cm
- Battery voltage: 18V



## FLOOR CLEANER JUNIOR

Eccentric machine:

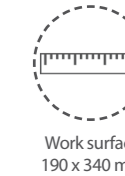
- Power consumption: 350 Watt
- Motor speed: 2800 1/min
- Work surface: 190x340mm
- Supply voltage: 230 V
- Network voltage frequency: 50 Hz
- Weight: 22-27 kg
- Additional weight:  
*(not included in the delivery)* 5 kg
- Stroke: 5 mm
- Hose connection: 27 mm
- Water tank capacity: 3 l



## FLOOR SANDER JUNIOR

Eccentric machine:

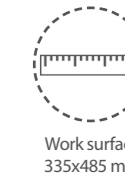
- Power consumption: 350 Watt
- Motor speed: 2800 1/min
- Work surface: 190x340mm
- Supply voltage: 230 V
- Network voltage frequency: 50 Hz
- Weight: 21-26 kg
- Additional weight:  
*(not included in the delivery)* 5 kg
- Stroke: 5 mm
- Hose connection: 27 mm



## FLOOR SANDER

Eccentric machine:

- Power consumption: 1500 Watt
- Vacuum cleaner: 1000 Watt
- Motor speed: 2800 1/min
- Work surface: 335x485mm
- Supply voltage: 230 V
- Weight: 57-83 kg
- Network voltage frequency: 50 Hz
- Stroke: 7 mm
- Additional weights:  
*(4 additional weights included in the scope of delivery. Up to 6 weights can be added)* 6,5 kg



## FLOOR SANDER MULTI

Eccentric machine:

- Power consumption: 1500 Watt
- Vacuum cleaner: 1000 Watt
- Motor speed: 2800 1/min
- Work surface: 335x485mm
- Supply voltage: 230 V
- Water tank capacity: 10 l
- Weight: 57-83 kg
- Stroke: 7 mm
- Additional weights:  
*(4 additional weights included in the scope of delivery. Up to 6 weights can be added)* 6,5 kg



*Suction lip not included in the scope of delivery*

## FLOOR CLEANER

Eccentric machine:

Power consumption:	1500 Watt
Motor speed:	2800 1/min
Work surface:	335x485mm
Supply voltage:	230 V
Network voltage frequency:	50 Hz
Weight:	48 kg
Additional weight: <i>(not included in the delivery)</i>	6,5 kg
Stroke:	7 mm
Water tank capacity:	10 l



Gets right into corners



Easy to use



Work surface 335x485 mm



With integrated 10 l water tank



Ideal for structured surfaces



Variable machine weight

## BIG BOY

Orbital sander

Power consumption:	1500 Watt
Motor speed:	2800 1/min
Work surface:	335x485mm
Supply voltage:	230 V
Weight:	22 kg
Network voltage frequency:	50 Hz
Stroke:	7 mm
Hose connection:	27mm



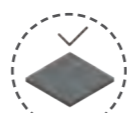
Gets right into corners



Easy to use



Work surface 335x485 mm



Uniform and clean sanding pattern



Ideal for structured surfaces



8 times larger sanding surface than with 150 mm sanders

## BIG BOY JUNIOR

Orbital sander

Power consumption:	350 Watt
Motor speed:	2800 1/min
Work surface:	190x340mm
Supply voltage:	230 V
Weight:	10 kg
Weight heavy:	18 kg
Network voltage frequency:	50 Hz
Stroke:	5 mm
Hose connection:	27mm



Gets right into corners



Easy to use



Work surface 190x340 mm



Uniform and clean sanding pattern



Ideal for structured surfaces



Perfect for staircase processing

## AiO all-in-one SCRUBBING SUCTION MACHINE

Eccentric machine

Work surface:	335x585 mm
Suction bar width:	870 mm
Fresh water tank:	40 l
Dirty water tank:	40 l
Machine dimensions:	137x81,5x113 cm
Net weight without batteries:	149 kg
Number of batteries:	2
Battery voltage:	24 V
Battery amperage:	105 Ah
Theoretical hourly output:	3135 m <sup>2</sup> /h
Maximum speed:	5,5 km/h
Max. pad pressure:	29 kg
Motor speed:	3100 1/min.
Power cleaning motor:	500 watts
Rated power drive motor:	200 watts
Total oscillation value:	<2,5 m/s <sup>2</sup>
Drive:	electronic
Suction motor power:	410 watts
Sound pressure level:	83 dB(A)
Drive roller:	Ø 230 mm



Height-adjustable handle, simple 2-button operation



Excellent load distribution thanks to large transport wheels



Work surface 335x585 mm



Speed-dependent water consumption



Ideal for structured surfaces



Travel drive with 3 steps

THE  
NEW  
JÖST  
AiO

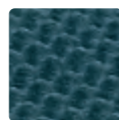


# NUBBED FLOORS

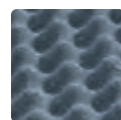
Application and pad recommendations on nubbed floors:



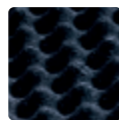
**Abranopp® white**  
Polishing nubbed floors



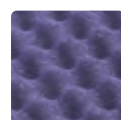
**Abranopp® green**  
Cleaning heavily soiled floors with water,  
removing coatings with basic cleaner



**Abranopp® grey**  
Cleaning dirty floors with water



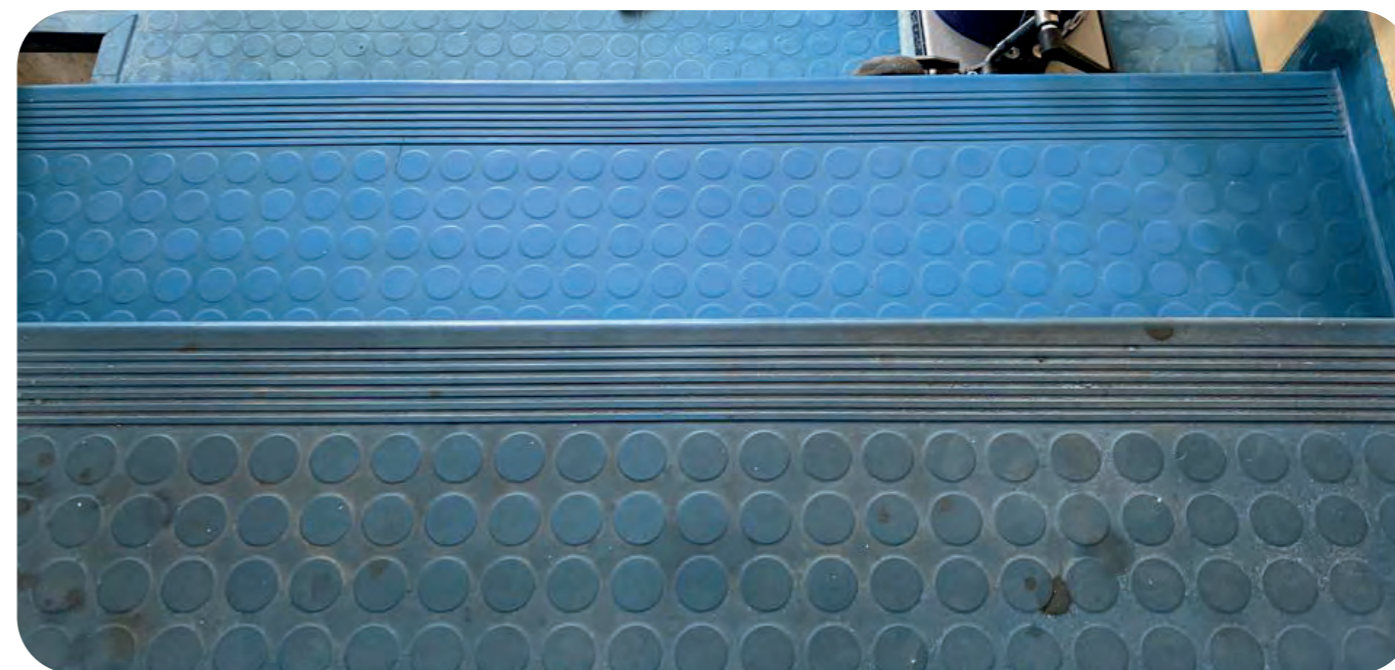
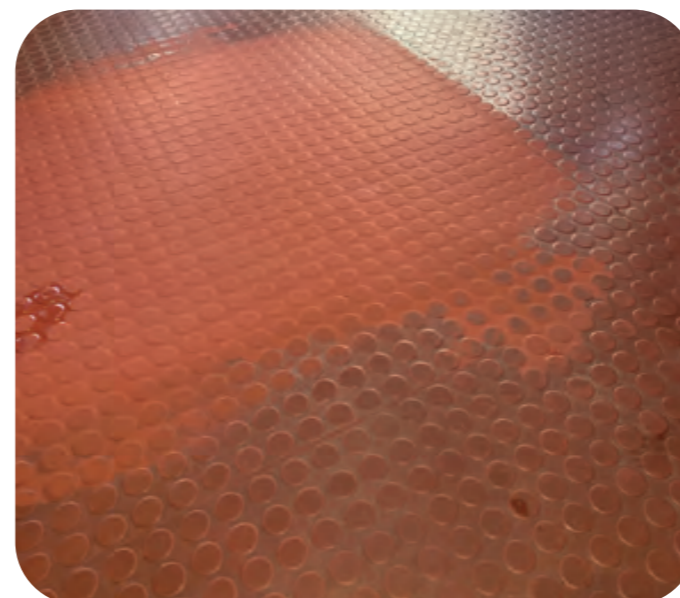
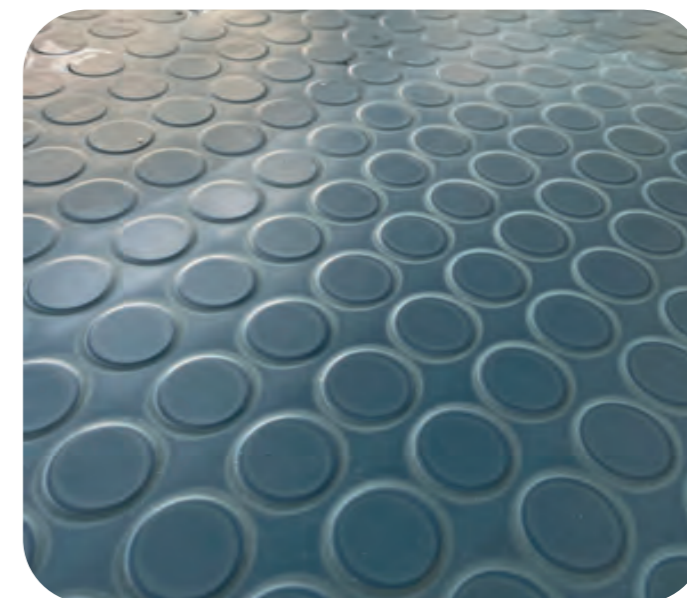
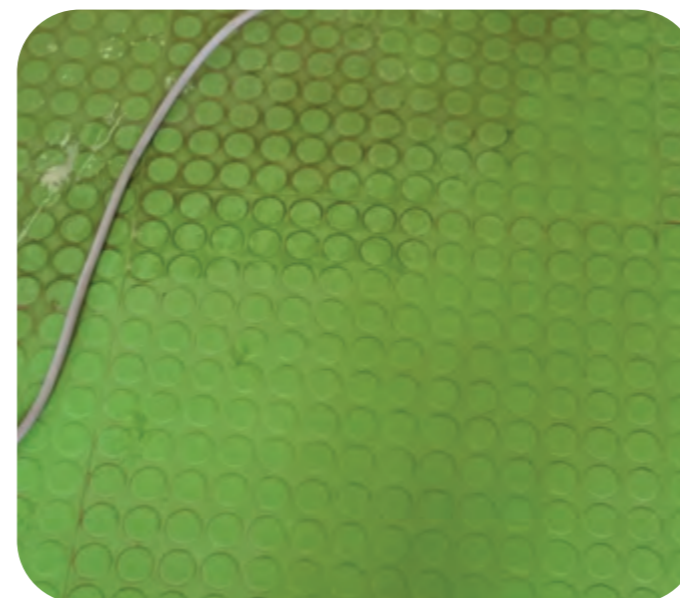
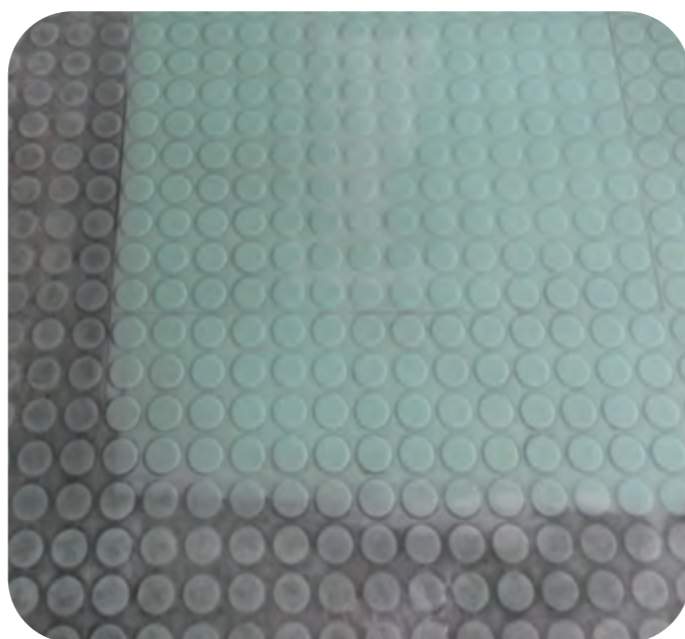
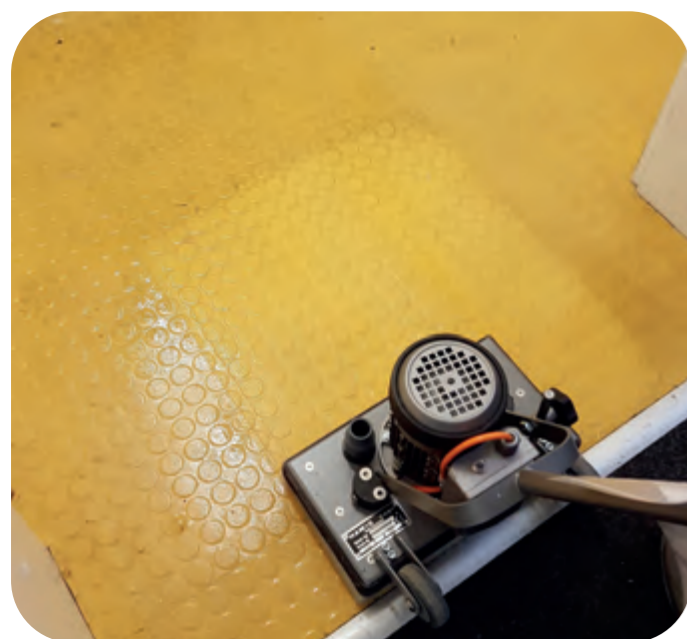
**Abranopp® black**  
Removal of hard and multi-layer coatings  
with basic cleaner < PH value 10



**Abranopp® purple**  
Cleaning lightly to moderately  
soiled floors with water and  
maintenance cleaning

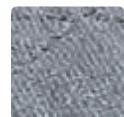


**Application video**  
Cleaning of nubbed floors with our  
Abranopp® Pad grey

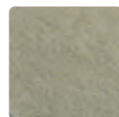


# RUBBER FLOORS

Application and pad recommendations on rubber floors:



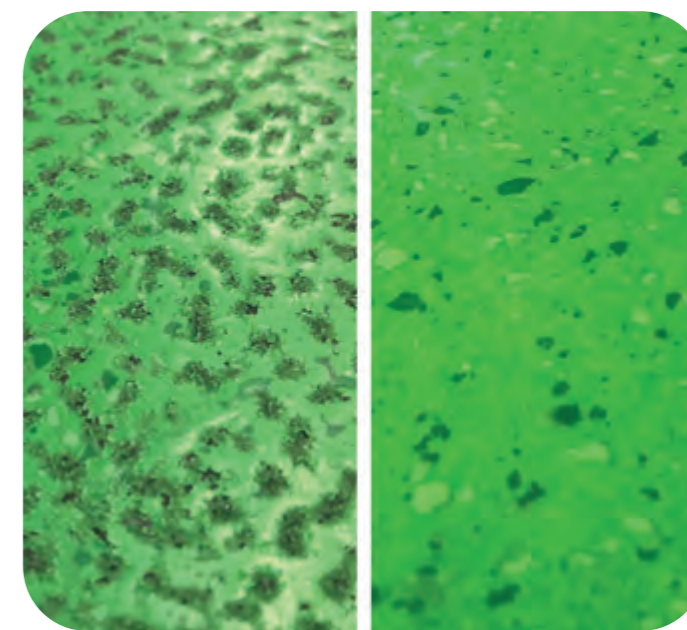
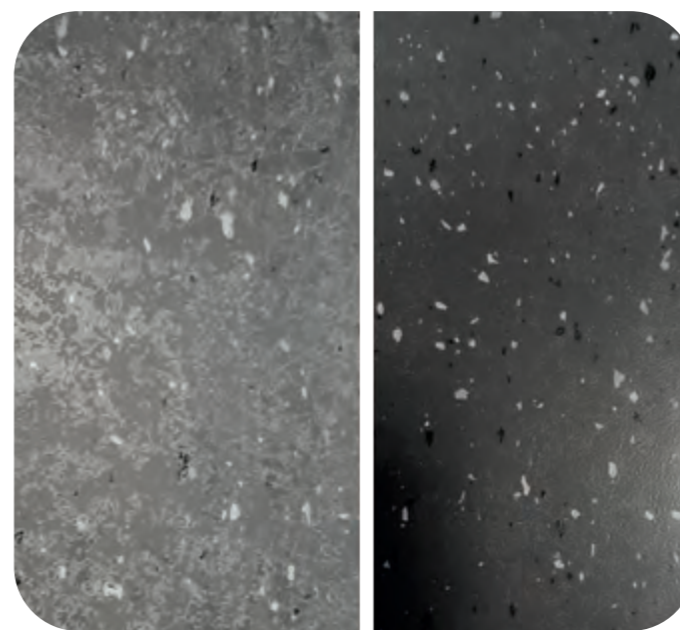
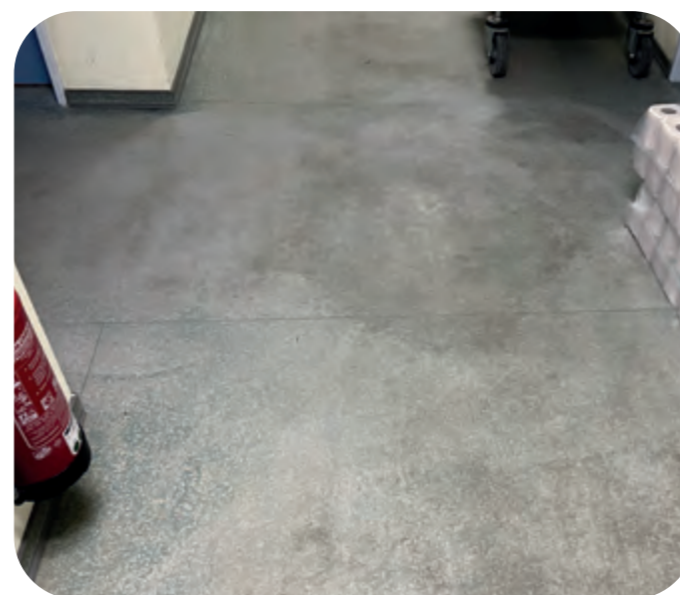
**Microfiber pad grey**  
Intensive cleaning with water only



**Diamond® pads**  
Removal of coatings with water. Reconditioning of worn floors.



**Abraflex® Superpad red**  
Maintenance cleaning



# LINOLEUM FLOORS

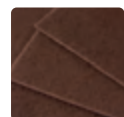
Application and pad recommendations on linoleum floors:



**Blue Wave**  
Intensive cleaning with water only



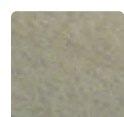
**Abraflex® Superpad red**  
Maintenance cleaning



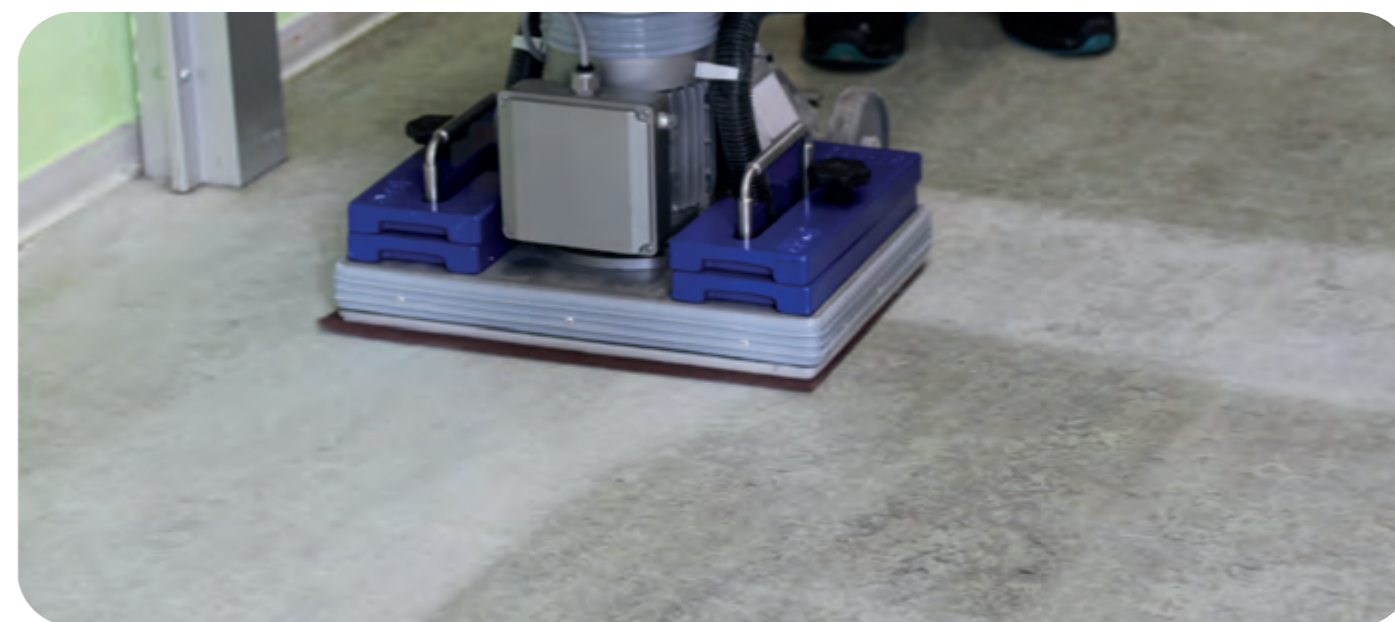
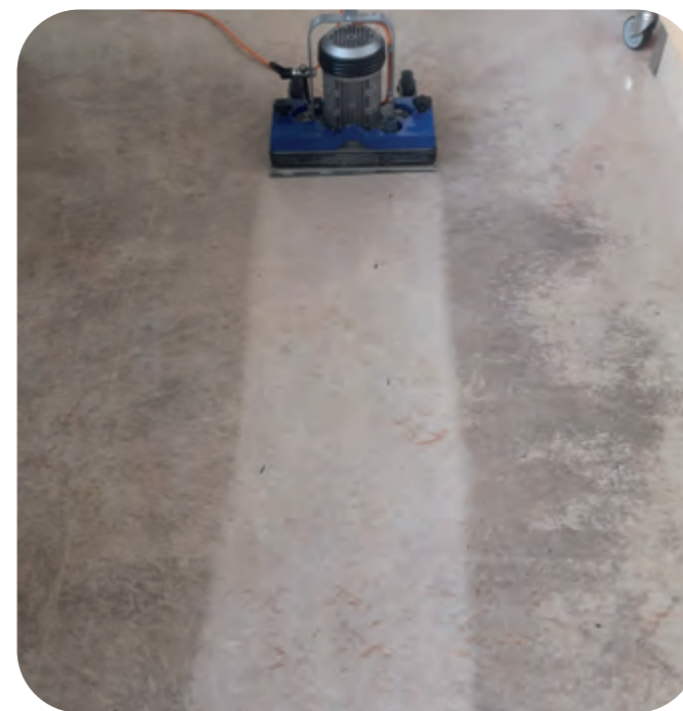
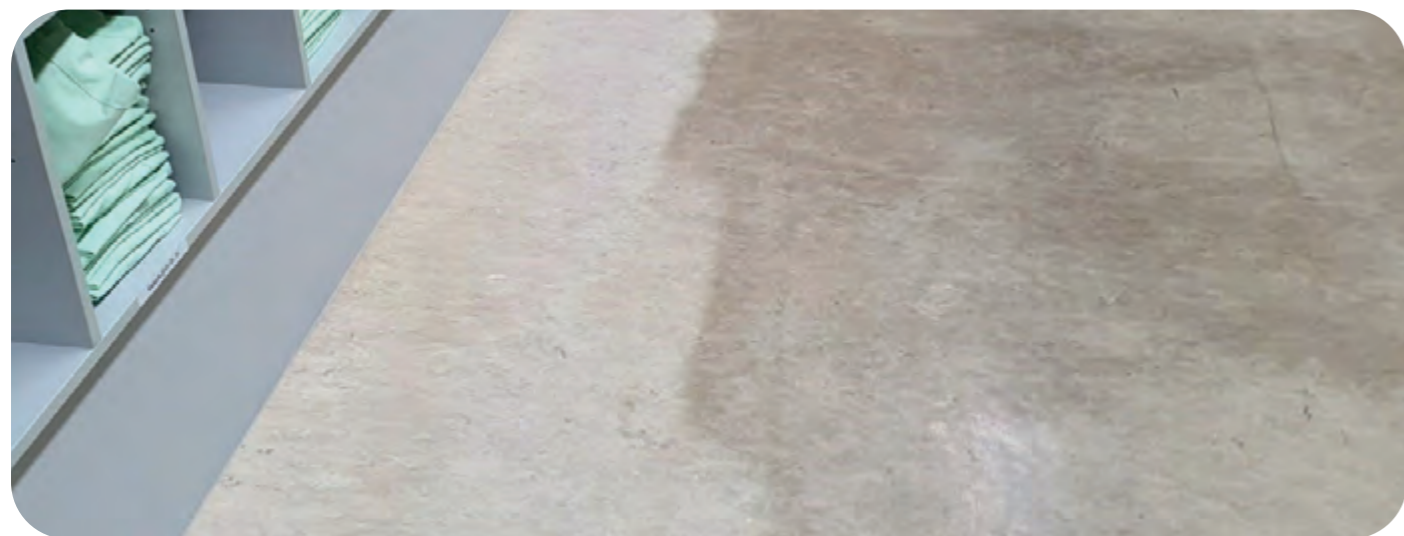
**Abraflex® maroon pad**  
Coatings can be removed with water or be used dry (via suction)



**Application video**  
Removal of coatings with our Abraflex® Maroon Pad



**Diamond® pads**  
Removal of coatings with water



# PVC/VINYL FLOORS WITHOUT STRUCTURE

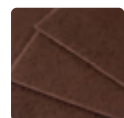
Application and pad recommendations on PVC or vinyl floors without structure:



**Blue Wave melamine pad**  
Intensive cleaning with water only



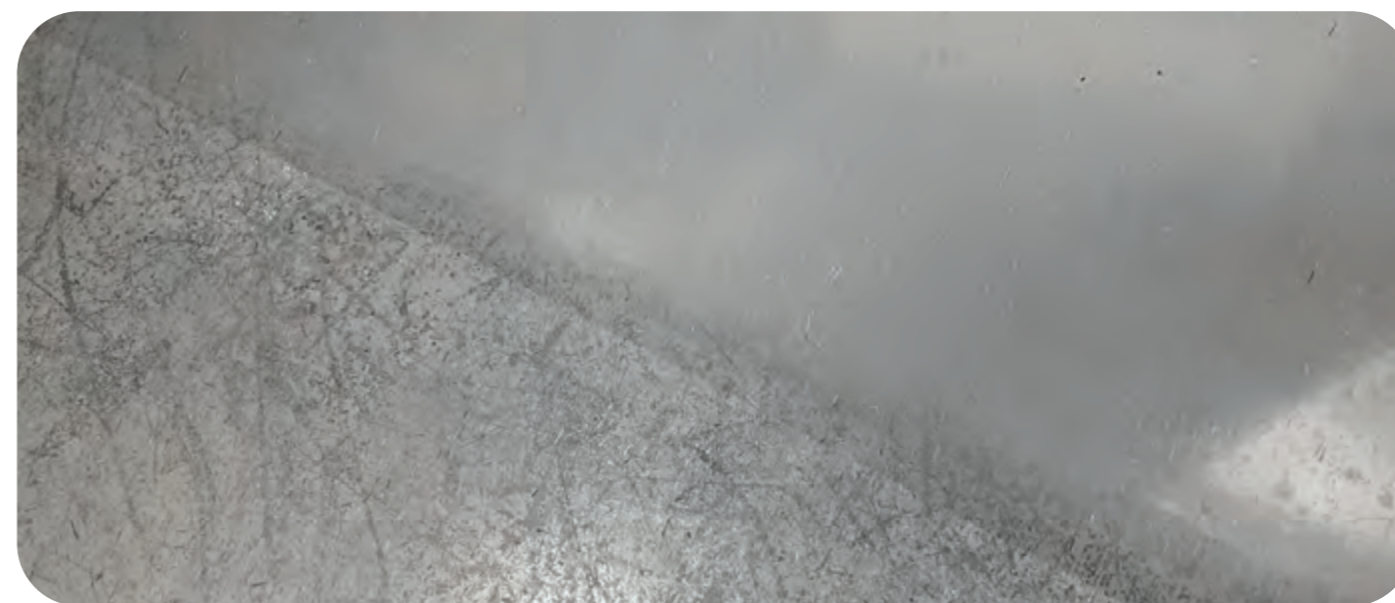
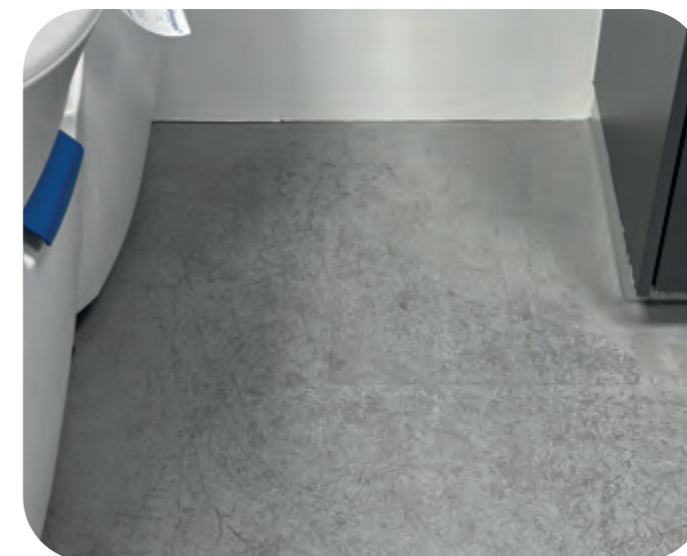
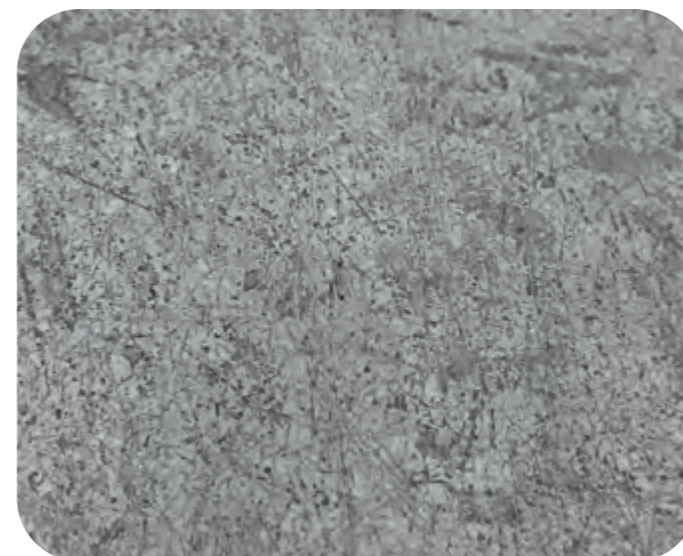
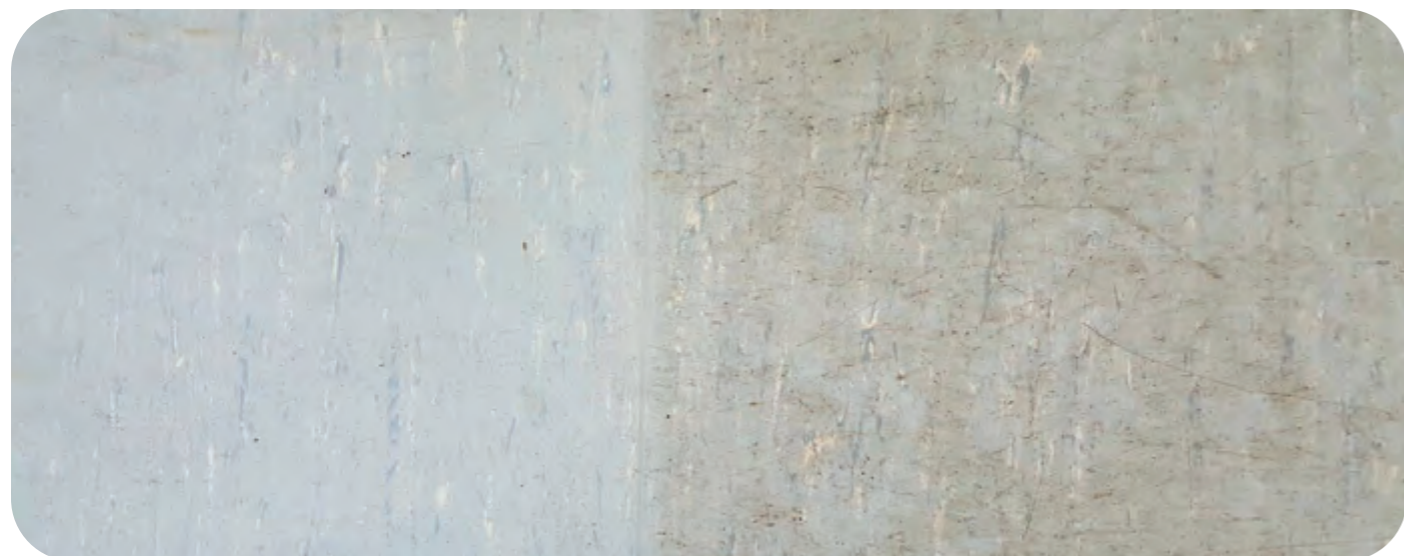
**Diamond® pads**  
Removal of coatings with water



**Abraflex® Maroon Pad**  
Removal of coatings with water or dry (via suction) possible

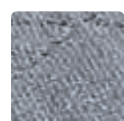


**useit®-Abrafilm®**  
Dry removal of heavy scratches using suction or water



# PVC/VINYL FLOORS WITH STRUCTURE

Application and pad recommendations on PVC or vinyl floors with structure:



**Microfiber pad grey**  
Machine intensive cleaning



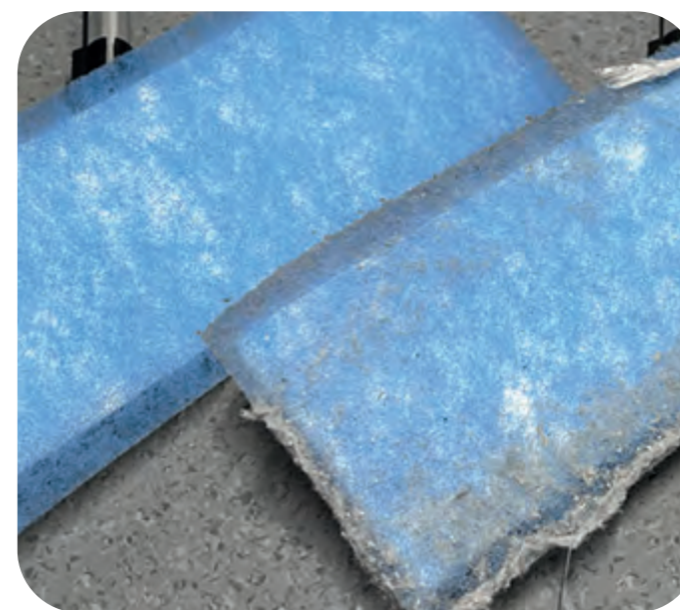
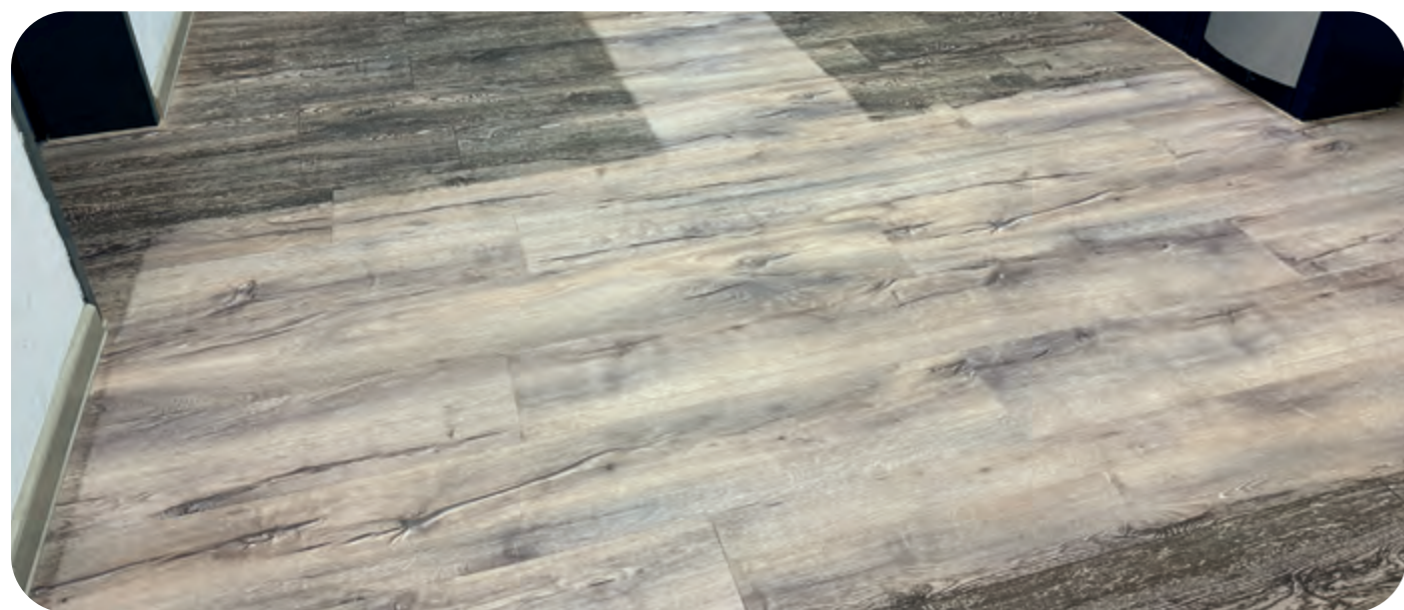
**Blue Magic dry cleaning nonwoven**  
Maintenance cleaning reduces wet cleaning intervals and resoiling and saves approx. 30-40% of working time



**Wimbledon lawn pad**  
Machine intensive cleaning



**Application video**  
Cleaning a vinyl floor with our grey microfiber pad



**"IT DOESN'T ALWAYS HAVE TO BE WET!"**  
*Translated from the original quote by Martin Lutz, FIGR*

The German Southwest Clinics Association carried out a model project on the subject of dry cleaning in hospitals. The dust-binding cleaning process was closely examined, not only in terms of hygiene, but also in terms of work ergonomics. The Jöst Blue Magic won the test convincingly.

**DO YOU WANT NUMBERS, DATA AND FACTS?**

Learn more about the dry cleaning system with our Blue Magic



# EPOXY RESIN FLOORS

Application and pad recommendations on epoxy resin floors:



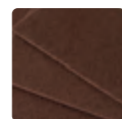
**Wimbledon lawn**  
Intensive cleaning with water only



**Diamond® pads**  
Removal of smears with water only



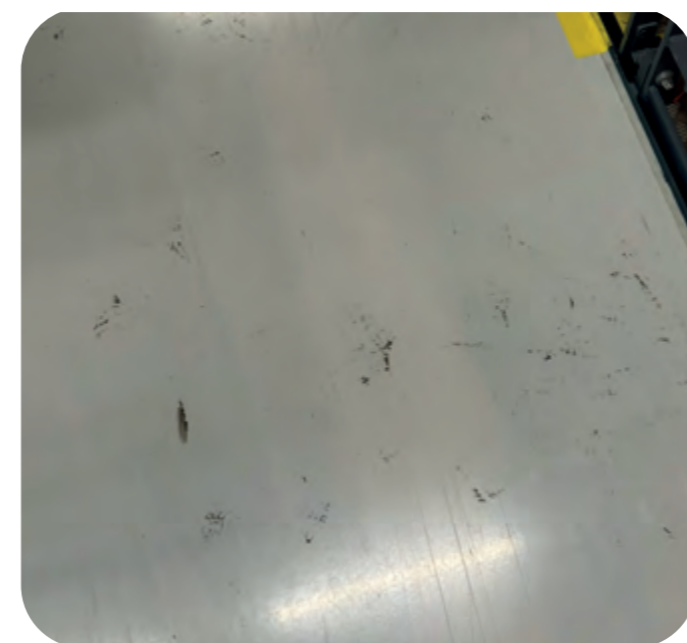
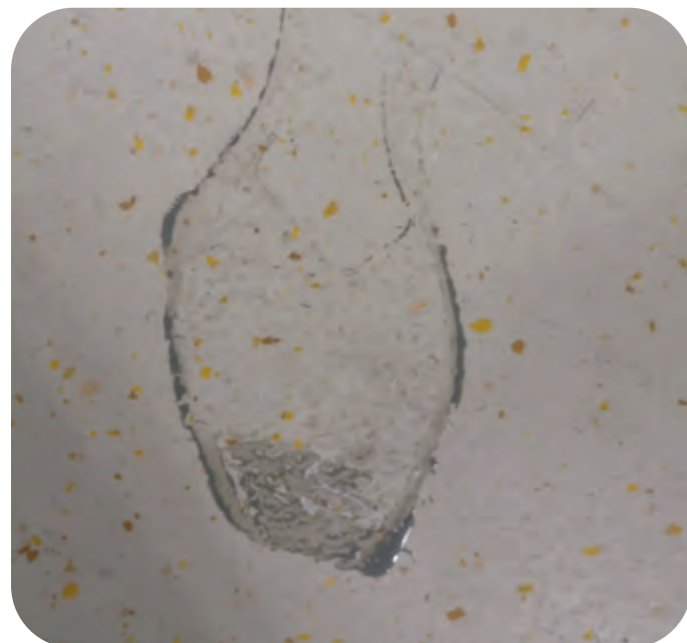
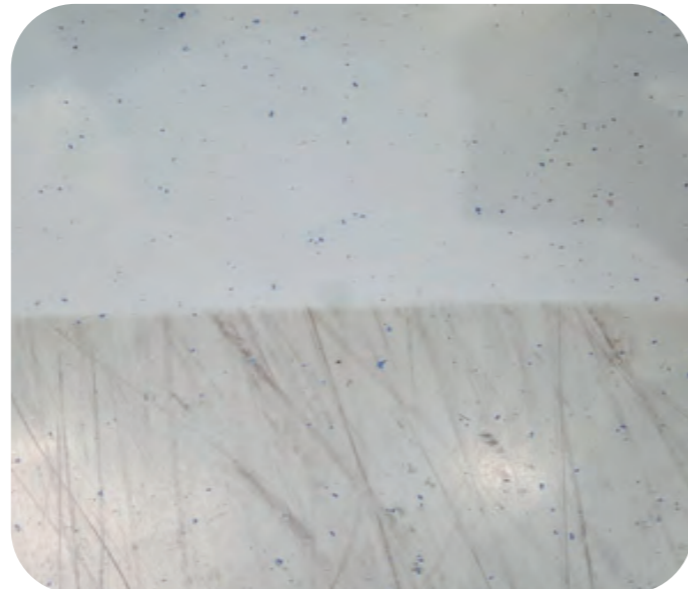
**Blue Wave melamine pad**  
Intensive cleaning with water only



**Abraflex® Maroon pad**  
Removal of smears with water only

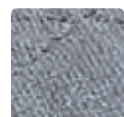


**Application video**  
Edge structures & adhesive soiling on epoxy flooring

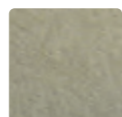


# MINERAL FLOOR COVERINGS

Application and pad recommendations for mineral floor coverings such as marble, terrazzo or concrete:



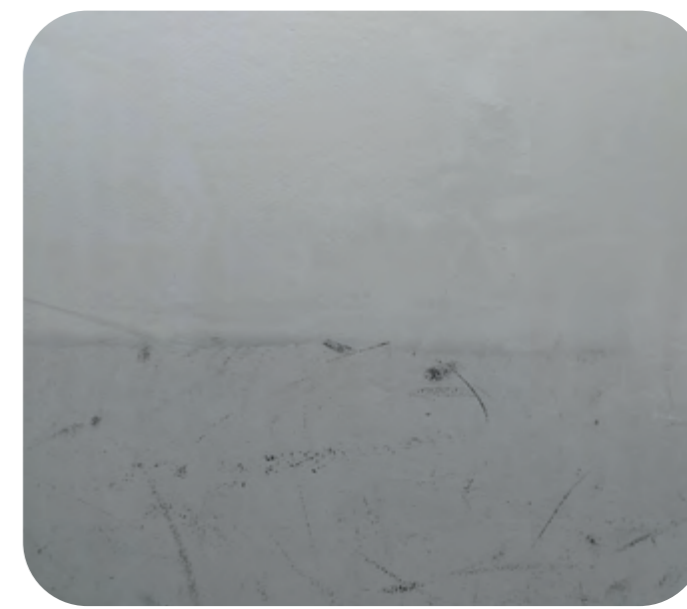
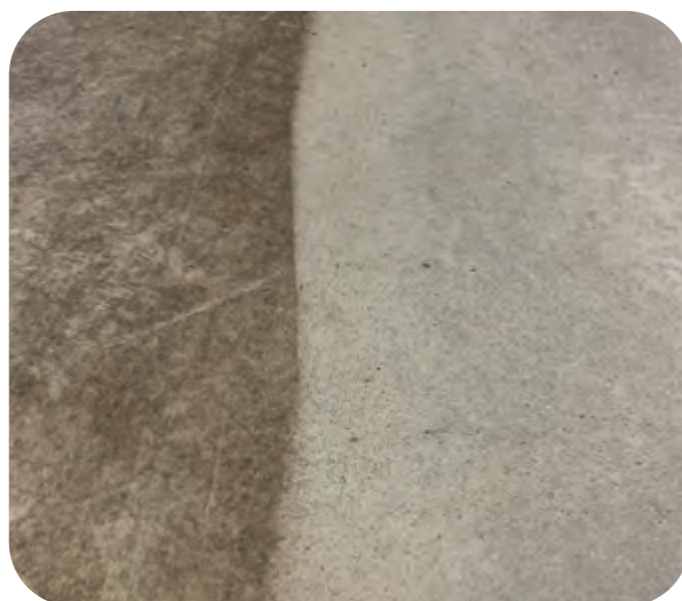
**Microfiber pad grey**  
Intensive cleaning with water only



**Diamond® pads**  
Reconditioning of worn floors. Maintaining the cleaning condition and gloss level during maintenance cleaning.

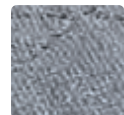


**Blue Wave melamine pad**  
Intensive cleaning with water only

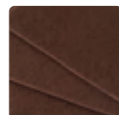


# TILES/STONE FLOORS WITHOUT STRUCTURE

Application and pad recommendations for tiles and stone floors without structure:



**Microfiber pad grey**  
Intensive cleaning with water only



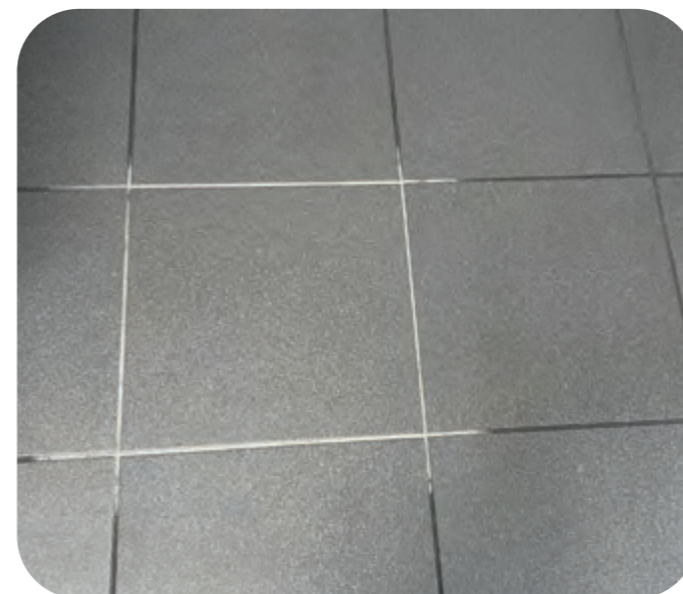
**Abraflex® Maroon pad**  
Removing limescale with water



**Blue Wave melamine pad**  
Intensive cleaning with water only

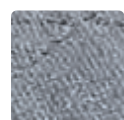


**Application video**  
Terrace cleaning



# TILES/STONE FLOORS WITH STRUCTURE

Application and pad recommendations for tiles and textured stone floors as well as interior and exterior decking:



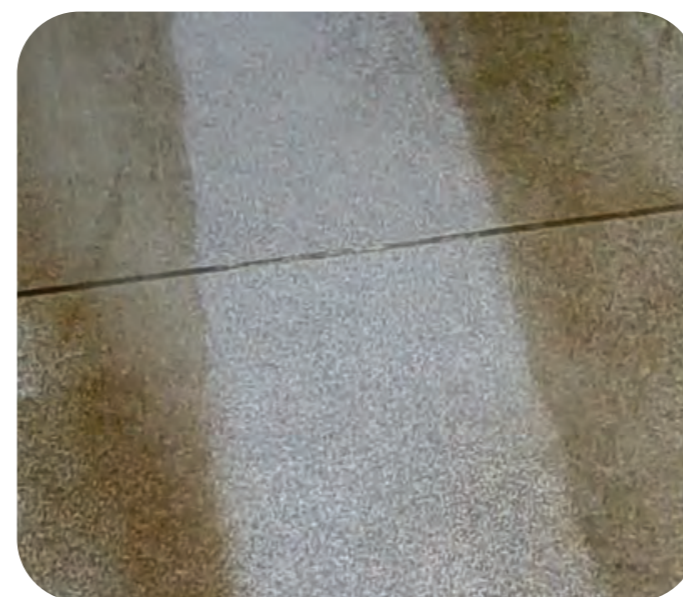
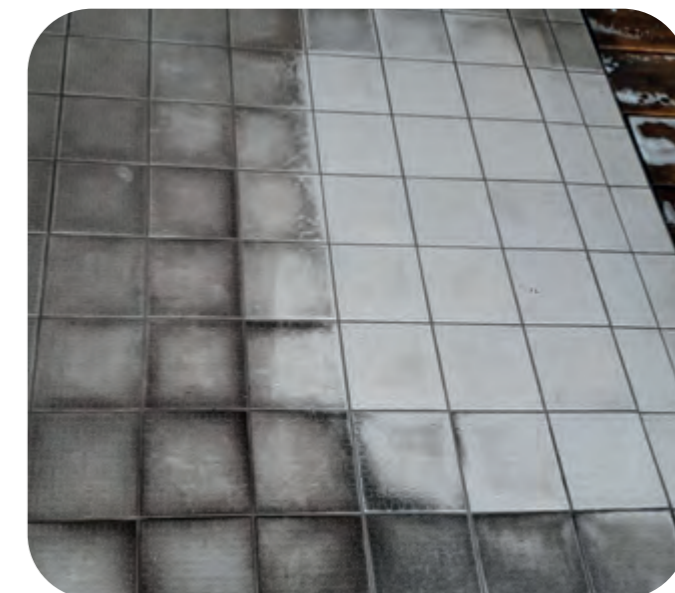
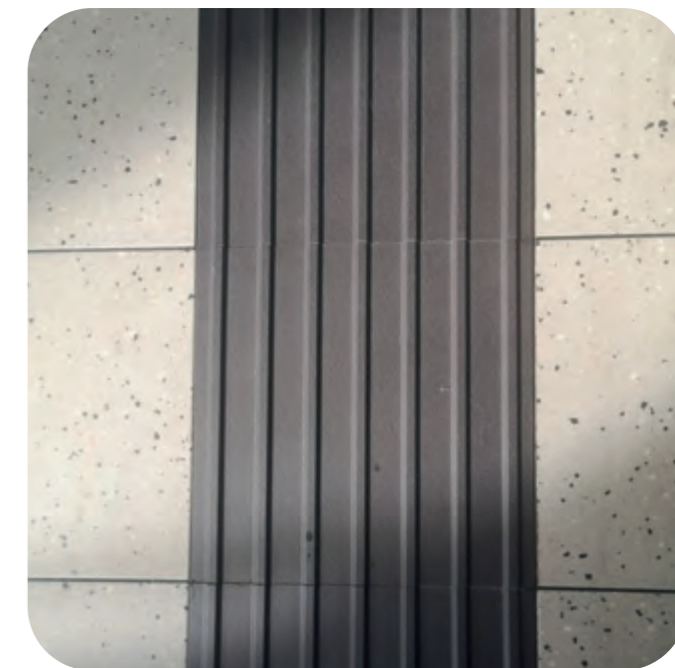
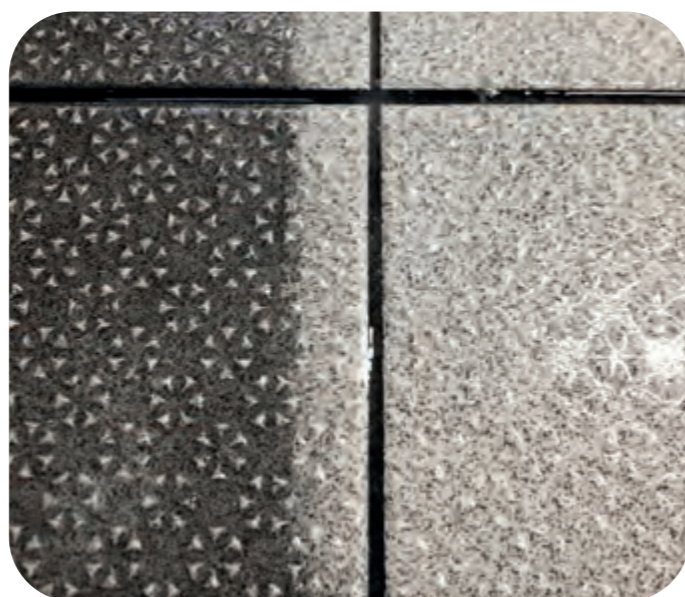
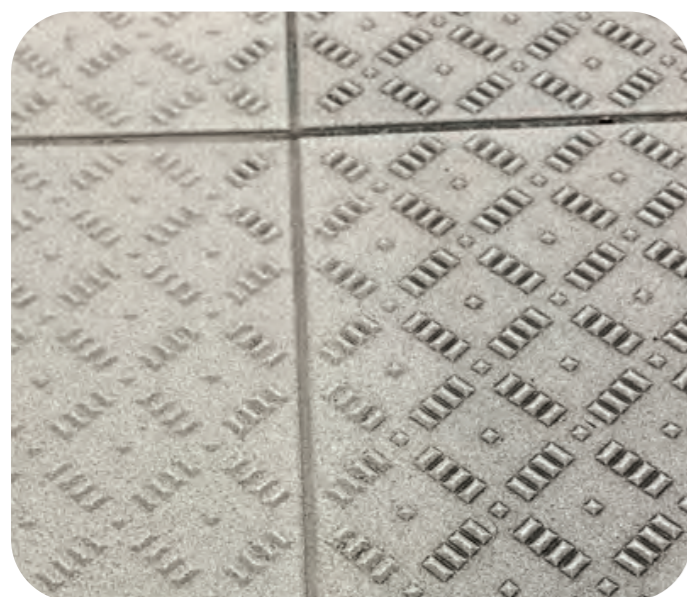
**Microfiber pad grey**  
Machine intensive cleaning with water



**Wimbledon lawn**  
Machine intensive cleaning with water

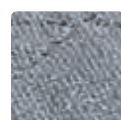


**Application video**  
Cleaning an outdoor terrace



# PARQUET AND FLOORBOARDS

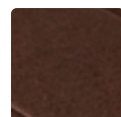
Application and pad recommendations for parquet and plank floors:



**Microfiber pad grey**  
Cleaning with water (well wrung out)



**useit®-Abrafilm®**  
Sanding of sealed floors, dry via suction



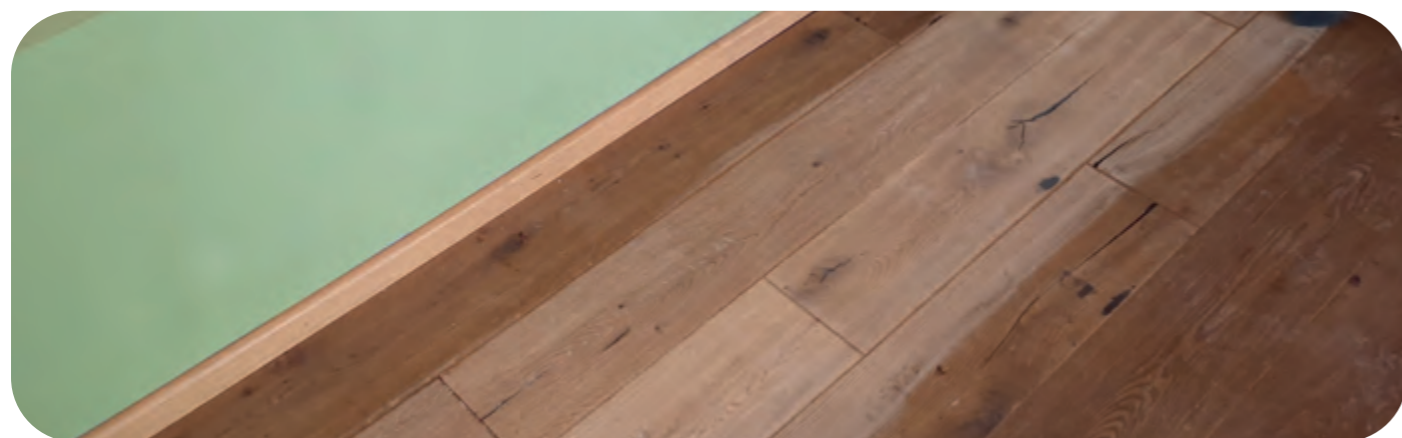
**Abraflex® Maroon pad**  
Cleaning dry via suction or with water via spraying process



**useit® Superpad P unperforated grit 24**  
Depending on requirements, you can also start with Superpad P grit 24



**useit® Superpad P yellow**  
Sanding oiled floors



# STAINLESS STEEL, GLASS, CERAMIC

Application and cleaning recommendations for sensitive surfaces:

*\*Do not use on plastic or acrylic glass*



**Crusty® sponge**  
Intensive cleaning and limescale removal  
with water only



**Crusty® Pad incl. Velcro holder**  
Intensive cleaning and limescale removal  
with water only



**Crusty® Pad incl. microfiber glove**  
Intensive cleaning and limescale removal  
with water only

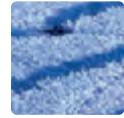


**Crusty® Pad incl. CLINI holder**  
Intensive cleaning and limescale removal  
with water only



# TEXTILE FLOOR COVERINGS/UPHOLSTERY

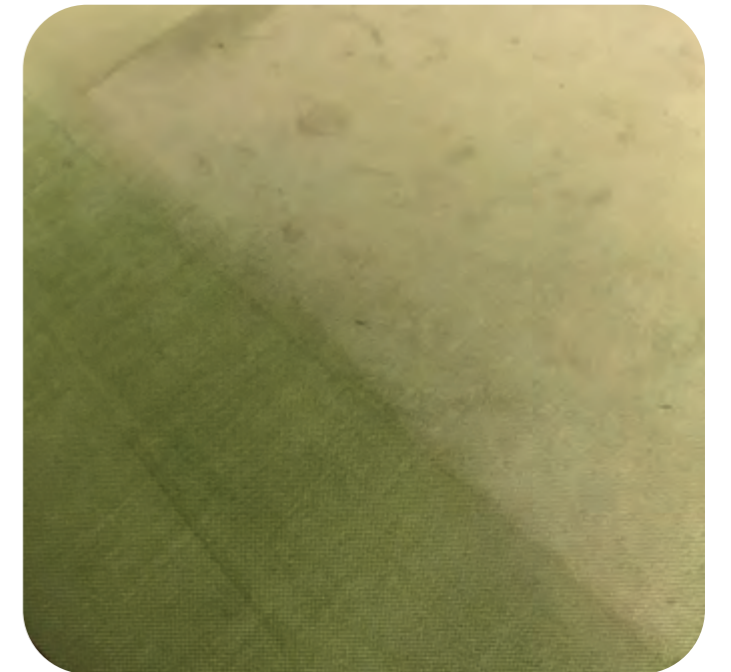
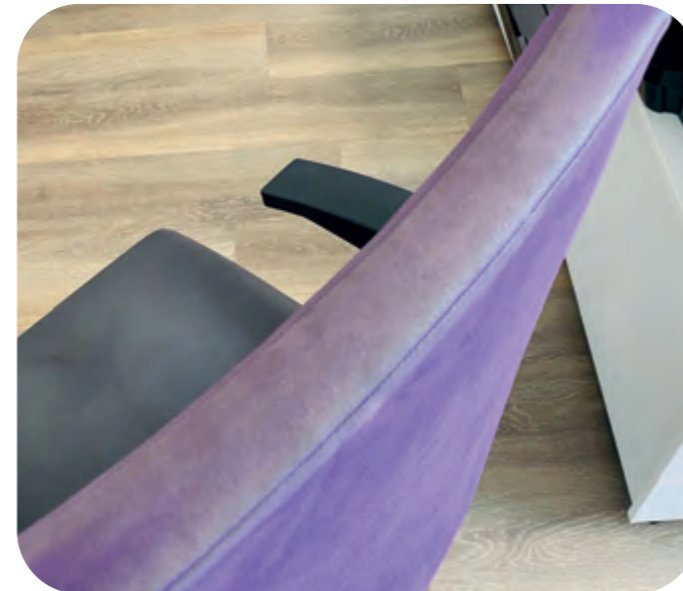
Application and pad recommendations for textile floor coverings or upholstery:



**Microfiber pad blue/melange**  
Intensive cleaning with water



**Microfiber pad blue/melange round pad**  
Easily cleans sofas, carpets or armchairs. With the accompanying Velcro plate, the pad fits on all cordless drills available on the market





## Do you have any questions?

We'll be delighted to advise you personally and professionally: